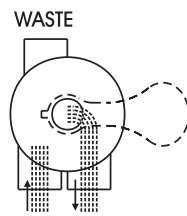


FUNCTIONS OF VALVE POSITIONS

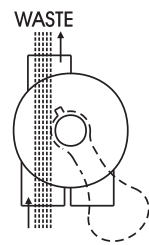
Valve Postion	Function
FILTER	Normal Filtration
BACKWASH	Cleaning Filter by reversing the flow
RINSE	Used after backwash to flush dirt from valve
WASTE	By-passes filter, used for vacuuming to waste or lowering water level
RECIRCULATE	By-passes filter for circulating water to pool
CLOSED	Shuts off all flow to filter or poo

FILTER



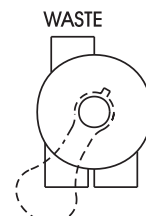
IN FLOW OUT FLOW

WASTE



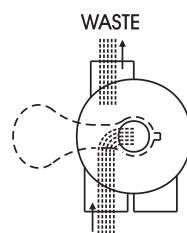
IN FLOW OUT FLOW

CLOSED



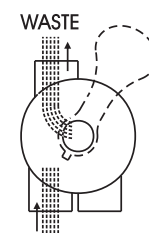
IN FLOW OUT FLOW

BACKWASH



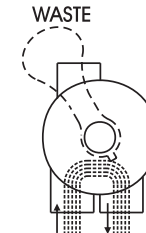
IN FLOW OUT FLOW

RINSE



IN FLOW OUT FLOW

RECIRCULAT



IN FLOW OUT FLOW

GENERAL

1. Pipe tap boss provided for optional influent pressure gauge.
2. **SERVICING VALVE**(Stop pump,close gate valve in suction&discharge before proceeding):
 - a. Set handle in filter position, b. Remove cover screws, c. Lift cover and key assembly out.

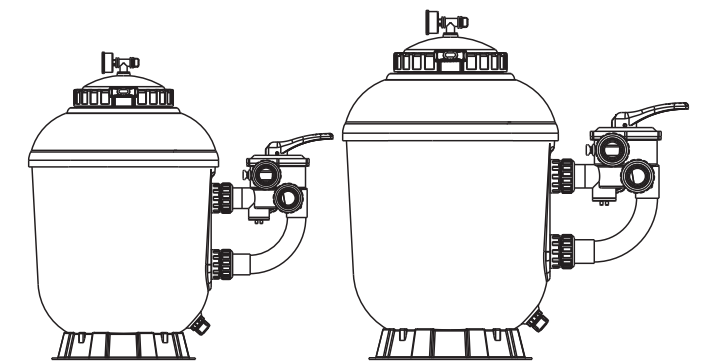
TO ASSEMBLE:

1. Place valve key so that wedge opening is at TOP port (handle in Filter psn.). Flat edge of cover screw lug should align with flat edge of body screw lug.
2. Position cover O'Ring.
3. Secure assembly to body with cover screws. Tighten cover screws evenly and alternately. Do not over-tighten.

WARNING

- ⚠ THIS FILTER OPERATES UNDER HIGH PRESSURE. WHEN ANY PART OF THE CIRCULATING SYSTEM (e.g., CLAMP, PUMP, FILTER, VALVES, ETC.) IS SERVICED, AIR CAN ENTER THE SYSTEM AND BECOME PRESSURIZED . PRESSURIZED AIR CAN CAUSE THE LID OR VALVE TO BE BLOWN OFF WHICH CAN RESULT IN SEVERE INJURY, DEATH, OR PROPERTY DAMAGE. DO NOT UNSCREW SCREWS OF FLANGE CLAMP WHILE FILTER OPERATING.
- ⚠ TURN PUMP OFF BEFORE CHANGING VALVE POSITION.
- ⚠ TO PREVENT DAMAGE TO THE PUMP AND FOR PROPER OPERATION OF THE SYSTEM, CLEAN PUMP STRAINER AND SKIMMER BASKETS REGULARLY

Models:
SMG500 SMG650
SMG750 SMG900



FUNCTION

The filter uses special filter sand to remove dirt particles from pool water. The filter sand is loaded into the filter tank and functions as a permanent dirt removing media. When the control valve is in the FILTER position, the pool water which contains suspended dirt particles, is pumped through your piping system and is automatically directed by the patented filter control valve to the top of the filter tank. As the pool water is pumped through the filter, dirt particles are trapped by the sand bed, and filtered out. The cleaned Pool water is returned from the bottom of the filter tank, through the control valve and back to the pool through the piping system. This entire sequence is continuous and automatic. It provides for total recirculation of pool water through your filter and piping System.

After a period of time, the accumulated dirt in the filter causes a resistance to flow, and the flow diminishes. This means it is the time to clean your filter. With the control valve in the BACKWASH position, the water flow is automatically reversed through the filter so that it is directed to the bottom of the tank, up through the sand, flushing the previously trapped dirt and debris out the waste line. Once the filter is back-washed of dirt, set control valve to RINSE position and run pump for about 1/2 to 1 minute, and then set the control valve in the FILTER position, to resume normal filtering.

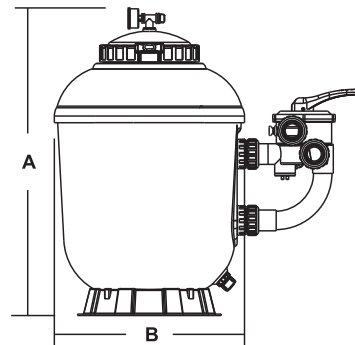
NOTE: Turn pump off before changing valve position.

INSTALLATION

Only simple tools (screwdriver and wrenches), plus pipe sealant for plastic adapters, are required to install and service the filter.

1. The filter should be placed on a level concrete slab, very firm ground, or equivalent. Position the filter so that the piping connections, control valve are convenient and accessible for operation and service.
2. Loading the sand media. Filter sand media is loaded through the top opening of the filter.
 - a. Loosen flange clamp and remove filter control valve (if previously installed).
 - b. Cap internal pipe with plastic cap to prevent sand from entering it.
 - c. We recommend filling tank approximately 1/2 way with water to provide a cushion effect when the filter sand is poured in. This helps protect the under-drain laterals from excessive shock.
 - d. Carefully pour in correct amount and grade of filter sand. (Be sure center pipe remains centered in opening.) Sand Surface Should be leveled and should come to about the middle of the filter tank. Remove plastic cap from internal pipe.
3. Assemble filter control valve to filter tank.
 - a. Insert filter control valve (with O'ring in place) into the tank neck, ensuring the twelve bolts which is pre-embedded in the tank neck through the twelve hole round the valve, taking care that the center pipe slips into the hole in the bottom of the valve as well.
 - b. Put the twelve nuts and washers onto each of the twelve bolts, then screw all the nuts on with wrench, ensuring that all nuts are tight.
 - c. Carefully screw pressure gauge (with O'ring in place) into tapped hole in valve body. Do not over-tighten.
 - d. Connect pump to control valve opening marked PUMP.
4. Make return to pool pipe connection to control valve opening marked RETURN and complete other necessary plumbing connections, suction lines to pump, waste, etc.
5. Make electrical connections to pump per pump instructions.
6. To prevent water leakage, be sure all pipe connections are tight.

MAIN DIMENSION



DIMENSION TABLE

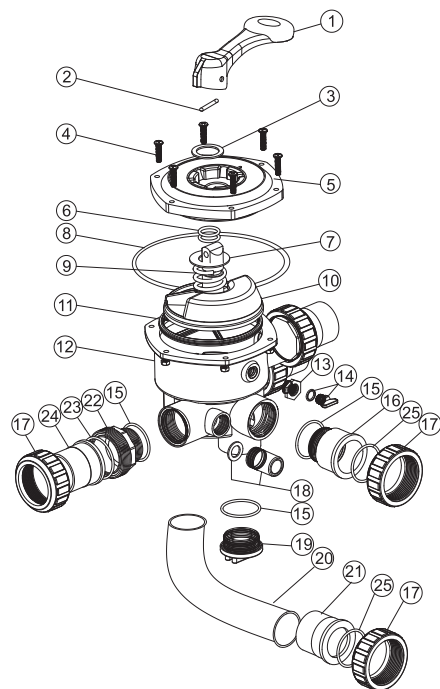
Model	High mm A	Diameter mm B	Valve inch	Sand kg
SMG500	850	516	1.5"	100
SMG650	943	666	1.5"	150
SMG750	1020	820	2.0"	250
SMG900	1130	920	2.0"	375

INSTALL/START-UP OF FILTE

1. Be sure correct amount of filter media sand is in tank and that all connections have been made and are secure.
2. Depress control valve handle and rotate to BACKWASH position. (To prevent damage to control valve seal, always depress handle before turning.)
3. Prime and start pump according to pump instructions (be sure all suction and return lines are open), allowing the filter tank to fill with water. Once water is flowing out of the waste line, run the pump for at least 1 minute. The initial backwashing of the filter is recommended to remove any impurities or fine sand particles in the sand media.
4. Turn pump off and set valve to RINSE position. Start pump and operate until water in sight glass is clear, about 1/2 to 1 minute. Turn pump off and set valve to FILTER position and restart pump. The filter is now operating in the normal filter mode, filtering dirt particles from the pool water.
5. Adjust pool suction and return valves to achieve desired flow. Check system and filter for water leaks and tighten connections, bolts, nuts, as required.
6. Note the initial pressure gauge reading when the filter is clean. (It will vary from pool to pool depending upon the pump and general piping system.) As the filter removes dirt and impurities from the pool water, the accumulation in the filter will cause the pressure to rise and flow to diminish. When the pressure gauge reading is 1.5 bar, higher than the initial "clean" pressure you noted, it is time to backwash the filter (see BACKWASH under filter and control valve functions).

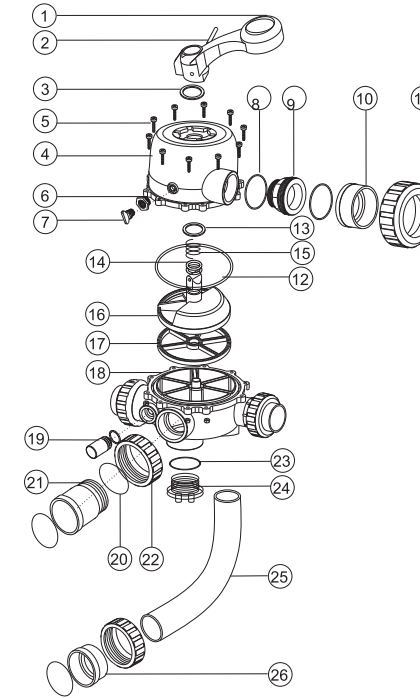
NOTE: During initial clean-up of the pool water it may be necessary to backwash frequently due to the unusually heavy initial dirt load in the water.

PARTS OF 1.5" VALVE



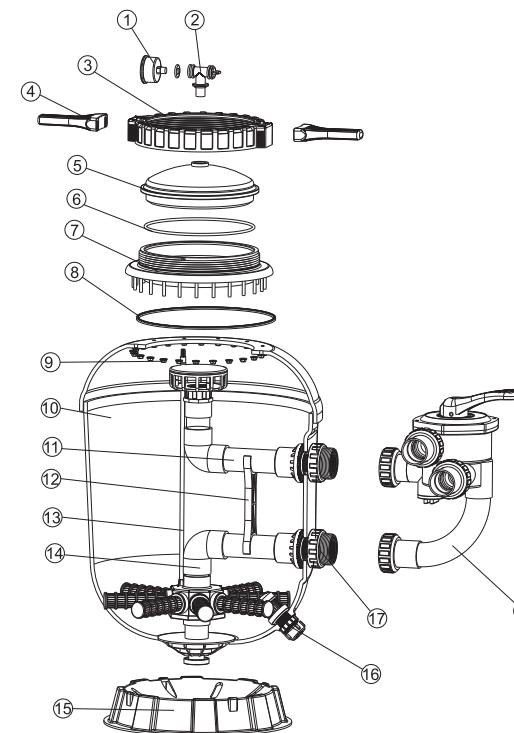
Key No.	Part No.	Product Description	Qty
1	01013003	Handle (Big)	1
2	03018008	Pin for Handle	1
3	01181001	Washer for Handle	1
4	89281203	M6*25 Screw with Nut for Camber Lid	6
	89280107	M6*30 Screw with Nut for Standard Lid	6
5	01013004	1.5" Side Mount Valve Standard Lid (Black)	1
6	02011022	O-Ring for 1.5" Valve Rotor	2
7	01181002	Washer for Spring	1
8	02011002	O-Ring for 1.5" Valve Lid	1
9	03014001	Spring for 1.5" Side Mount Valve	1
10	01021001	1.5" Valve Rotor	1
11	02311002	Spider Gasket	1
12	01013009	1.5" Side Mount Valve Bottom Body (Black)	1
13	01111048	Connector for Pressure Gauge/Stopper	1
14	89021303	Drain Plug with O-ring	1
15	02020013	O-Ring	5
16	01013018	1.5" Union Tale (Black)	1
17	01013017	1.5" Union Nut (Black)	5
18	89280104	Sight Glass with O-Ring	1
19	01013100	1.5" Side Mount Valve Plug (Black)	1
20	01013149	1.5" Elbow Tube (Black) 120mm	1
21	01171002	1.5" Union (Metric)	1
22	01013015	1.5" Connector with External Thread (Black)	3
23	02011003	O-Ring for Union Adaptor	3
24	01171153	1.5" Union	3
25	02011003	O-Ring	2

PARTS OF 2.0" VALVE



Key No.	Part No.	Description English	QTY
1	01013003	Handle (Big)	1
2	03018008	Pin for Handle	1
3	01181001	Washer for Handle	1
4	01013021	2.0" Side Mount Valve Squareness Lid (Black)	1
5	89280107	M6*30 Screw with Nut	10
6	01111048	Connector for Pressure Gauge/Stopper	1
7	89021303	Drain Plug with O-Ring	1
8	02020016	O-Ring for 2.0" Union	8
9	01013031	2.0" Connector (Black)	3
10	01171154	2.0" Union (A/E)	3
11	01013032	2.0" Union Nut (Black)	3
12	02011009	O-Ring for 2.0" Valve Lid	1
13	01181002	Washer for spring	1
14	02011022	O-Ring for 2.0" Valve Rotor	2
15	03014014	Spring	1
16	01021002	2.0" Valve Rotor	1
17	02311003	Spider Gasket	1
18	01013026	2.0" Side Mount Valve Bottom Body (Black)	1
19	89280104	Sight Glass With O-Ring	1
20	02020018	O-Ring for Union Tale	1
21	01013099	2.0" Union Tale (Black)	1
22	01013034	2.0" Union Nut (Black)	2
23	02020017	O-Ring for Plug	1
24	01013101	2.0" Side Mount Valve Plug (Black)	2
25	01013150	2.0" Elbow Tube (Black) 183mm	1
26	01171035	2.0" Union (Metric)	1

REPLACEMENT PARTS OF FILTER



Key No.	Part No.	Description English	QTY
1	06011029	Oil Pressure Gauge With O-ring (40 psi)	1
2	89011101	T-shape Exhaust Switch	1
3	01271011	Ringlock Nut	1
4	01021004	Spanner for RingLock	2
5	01201021	Cover	1
6	02021065	O-Ring for Cover	1
7	01021135	SMG Filter Neck with Screws	1
8	02010229	Corrosion Proof O-Ring	1
9	03013038	Anti-slip Washer Nut	1
10	89014002	SMG500 FiterTank with Fasteners	1
	89014003	SMG650 FiterTank with Fasteners	1
	89014011	SMG750 FiterTank with Fasteners	1
	89014012	SMG900 FiterTank with Fasteners	1
11	89014004	SMG500 Top Part of the Inner Tank System	1
	89014005	SMG650 Top Part of the Inner Tank System	1
	89014013	SMG750 Top Part of the Inner Tank System	1
	89014014	SMG900 Top Part of the Inner Tank System	1
12	01111043	1.5" Tank System Support (SMG500, SMG650)	1
	01111090	2" Tank System Support (SMG750, SMG900)	1
13	89014006	SMG500 Air Vent Pipe	1
	89014007	SMG650 Air Vent Pipe	1
	89014015	SMG750 Air Vent Pipe	1
	89014016	SMG900 Air Vent Pipe	1
14	89014008	SMG500 Bottom Part of the Inner Tank System	1
	89014009	SMG650 Bottom Part of the Inner Tank System	1
	89014017	SMG750 Bottom Part of the Inner Tank System	1
	89014018	SMG900 Bottom Part of the Inner Tank System	1
15	01111059	SMG500 Base	1
	01111062	SMG650, SMG750 Base	1
	01112038	SMG900 Base	1
16	89010107	Water Drain Set	1
17	89014010	1.5" Connector Sets (SMG500, SMG650)	2
	89014019	2" Connector Sets	2
18	88280810	1.5" Side Mount Valve (SMG500, SMG650)	1
	88280813	2" Side Mount Valve (SMG750, SMG900)	1